

**SPECIFICATION**

EN60439-1:1999  
 MATERIAL: ZINTEC SHEET STEEL TO BS EN 10152:1994  
 SEGREGATION: FORM 4  
 INGRESS PROTECTION: I.P. 54  
 CONSTRUCTION: WELDED OUTER FRAME UNITS, DISHED COVERS & DOORS WITH FULLY WELDED CORNERS & EARTH STUD.  
 COMPARTMENTS: INTERCHANGEABLE INSERTS WHITE INSIDE OR AS EXTERNAL COLOUR  
 PLINTH: ROLLED STEEL CHANNEL  
 PAINT FINISH: ANY STOCK BS4800 OR RAL SEMI GLOSS

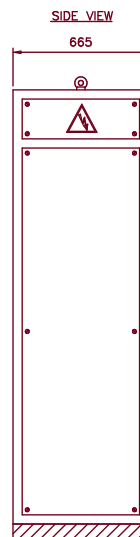
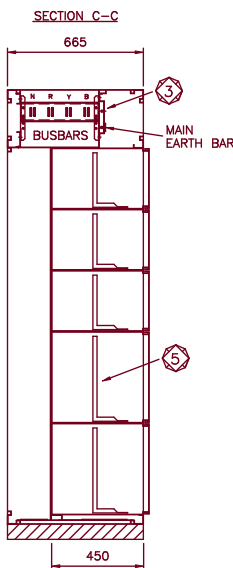
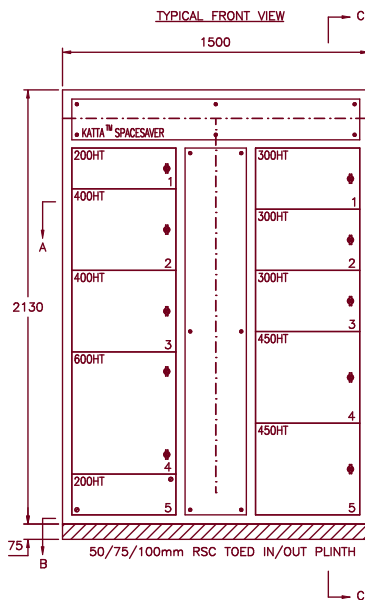
**KATTA™**

NEW DESIGN INNOVATION FEATURES:

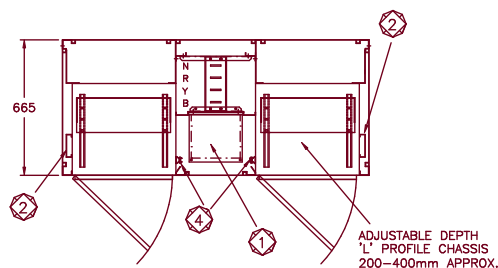
- ① EXTRA DEPTH CABLEWAY
- ② VERTICAL CONTROL INTER WIRING STEEL TRUNKING
- ③ HORIZONTAL TRUNKING MOUNTING FACILITY
- ④ INTEGRATED EARTH BONDING FACILITY FOR INSERT COMPARTMENTS WITH EARTH DROPPER BUSBAR
- ⑤ 'L' PROFILE CHASSIS

**FRONT ACCESS APPLICATION PROFILE**

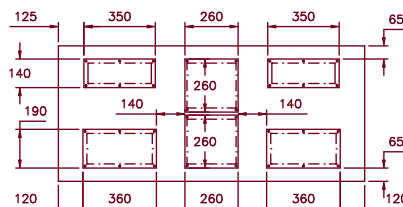
CABLE ACCESS: FRONT  
 CABLE ENTRY: TOP OR BOTTOM  
 STARTER TYPE: FIXED PATTERN  
 SHARED DROPPERS: YES



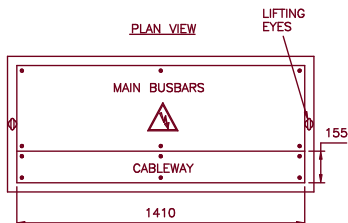
SECTION A-A



SECTION B-B



PLAN VIEW



**STANDARD BUSBAR / ENCLOSURE OPTIONS**

BUSBAR SYSTEM	BUSBAR RATINGS	No OF BARS PER PHASE	ENCLOSURE SIZES
K <sup>26</sup> ATTA™	26KA FOR 1 SECOND 630A HORIZONTAL 630A DROPPERS	1 1	2130mm HIGH 665mm DEEP
K <sup>50</sup> ATTA™	50KA FOR 1 SECOND 1200A - 2000A HORIZONTAL 800A - 1000A DROPPERS	2 1	2130mm HIGH 665mm DEEP

PLAIN OR TINNED HDHC COPPER AS REQUIRED  
 SECONDARY BUSBAR SHROUDING ALSO AVAILABLE  
 (OTHER CONFIGURATIONS AVAILABLE UPON REQUEST)

**Rolla**

Atlas Mill Road, Brighouse  
 West Yorkshire, England, HD6 1ET  
 Telephone: (01484) 710226  
 Fax: (01484) 718608  
 Email - sales@rolla.co.uk  
 Website - www.rolla.co.uk



**TITLE**

**FRONT ACCESS SPACESAVER  
 FIXED PATTERN  
 MCC DATA SHEET**

DRAWN	DATE	DRAWING NUMBER
ML	MAY 2002	KATTA 000