

SPECIFICATION

EN60439-1:1999
 MATERIAL: ZINTEC SHEET STEEL TO BS EN 10152:1994
 SEGREGATION: FORM 4
 INGRESS PROTECTION: I.P. 54
 CONSTRUCTION: WELDED OUTER FRAME UNITS, DISHED COVERS & DOORS WITH FULLY WELDED CORNERS & EARTH STUD.
 COMPARTMENTS: INTERCHANGEABLE INSERTS WHITE INSIDE OR AS EXTERNAL COLOUR
 PLINTH: ROLLED STEEL CHANNEL
 PAINT FINISH: ANY STOCK BS4800 OR RAL SEMI GLOSS

KATTA™

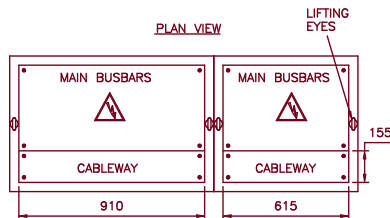
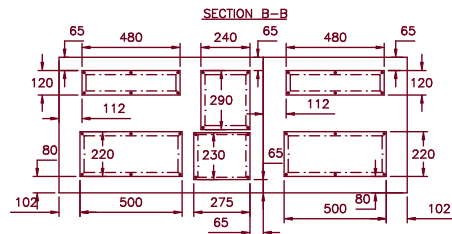
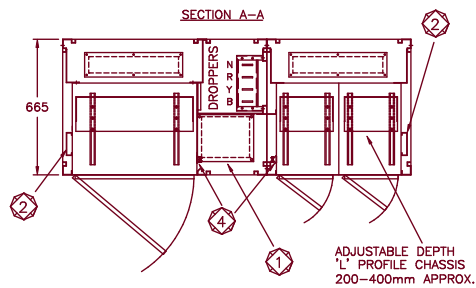
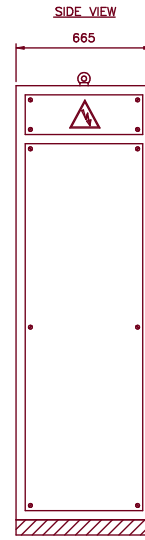
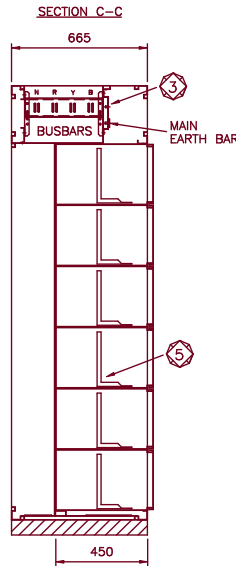
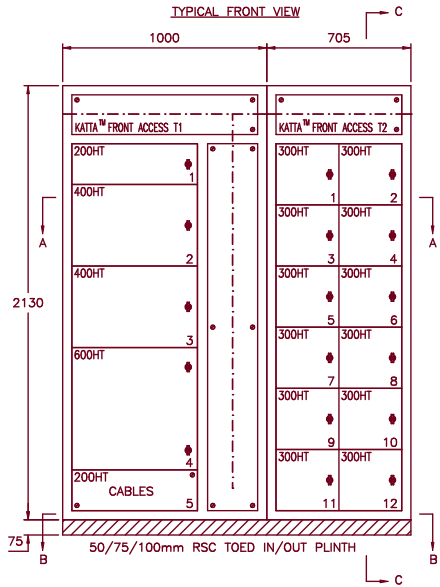
NEW DESIGN INNOVATION FEATURES:

- ① EXTRA DEPTH CABLEWAY
- ② VERTICAL CONTROL INTER WIRING STEEL TRUNKING
- ③ HORIZONTAL TRUNKING MOUNTING FACILITY
- ④ INTEGRATED EARTH BONDING FACILITY FOR INSERT COMPARTMENTS WITH EARTH DROPPER BUSBAR
- ⑤ 'L' PROFILE CHASSIS

FRONT ACCESS APPLICATION PROFILE

CABLE ACCESS: FRONT
 CABLE ENTRY: TOP OR BOTTOM
 STARTER TYPE: FIXED PATTERN
 SHARED DROPPERS: YES

TYPE 1 & TYPE 2 UNITS SHOWN USED AS A COMPLIMENTARY PAIR, MINIMIZING OVERALL SUITE LENGTH. FOR MORE ARDUOUS CABLING REQUIREMENTS, OMIT TYPE 2 UNITS (DROPPER BUSBARS CAN STILL BE SHARED).



STANDARD BUSBAR / ENCLOSURE OPTIONS

BUSBAR SYSTEM	BUSBAR RATINGS	No OF BARS PER PHASE	ENCLOSURE SIZES
K ²⁶ ATTA™	26KA FOR 1 SECOND	1	2130mm HIGH 665mm DEEP
	630A HORIZONTAL 630A DROPPERS		
K ⁵⁰ ATTA™	50KA FOR 1 SECOND	2	2130mm HIGH 665mm DEEP
	1200A - 2000A HORIZONTAL 800A - 1000A DROPPERS		

PLAIN OR TINNED HDHC COPPER AS REQUIRED
 SECONDARY BUSBAR SHROUDING ALSO AVAILABLE
 (OTHER CONFIGURATIONS AVAILABLE UPON REQUEST)

Rolla

Atlas Mill Road, Brighouse
 West Yorkshire, England, HD6 1ET
 Telephone: (01484) 710226
 Fax: (01484) 718608
 Email - sales@rolla.co.uk
 Website - www.rolla.co.uk



TITLE

**FRONT ACCESS
 FIXED PATTERN
 MCC DATA SHEET**

DRAWN	DATE	DRAWING NUMBER
ML	MAY 2002	KATTA 001