

SPECIFICATION

EN60439-1:1994
 MATERIAL: ZINTEC SHEET STEEL TO BS EN 10152:1994
 SEGREGATION: FORM 4
 INGRESS PROTECTION: I.P. 54
 CONSTRUCTION: WELDED OUTER FRAME UNITS, DISHED COVERS & DOORS WITH FULLY WELDED CORNERS & EARTH STUD.
 COMPARTMENTS: INTERCHANGEABLE INSERTS WHITE INSIDE OR AS EXTERNAL COLOUR
 PLINTH: ROLLED STEEL CHANNEL
 PAINT FINISH: ANY STOCK BS4800 OR RAL SEMI GLOSS

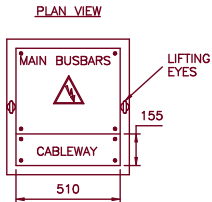
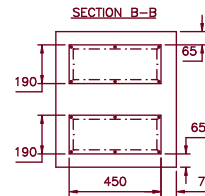
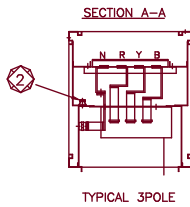
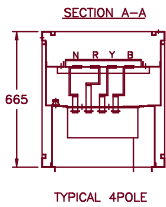
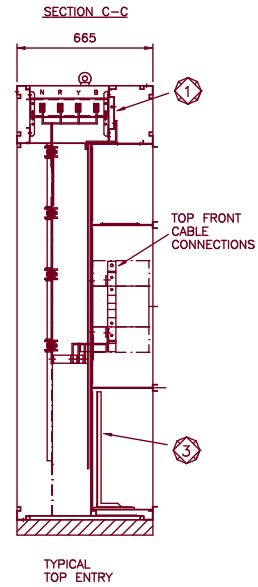
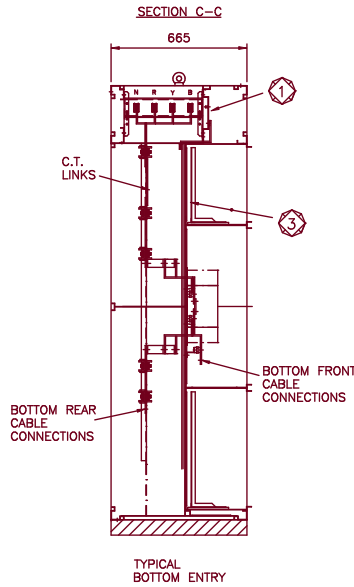
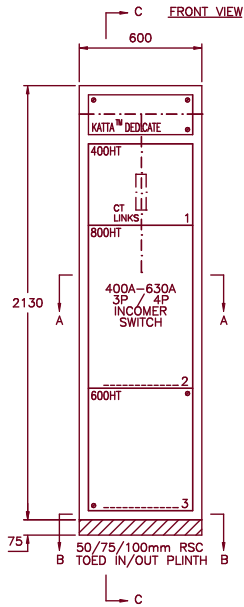
KATTA™

NEW DESIGN INNOVATION FEATURES:

- ① HORIZONTAL TRUNKING MOUNTING FACILITY
- ② INTEGRATED EARTH BONDING FACILITY FOR INSERT COMPARTMENTS WITH EARTH DROPPER BUSBAR
- ③ 'L' PROFILE CHASSIS

DEDICATE 600 APPLICATION PROFILE

CABLE ACCESS: FRONT - (TOP)
 FRONT OR REAR - (BOTTOM)
 CABLE ENTRY: TOP OR BOTTOM
 SWITCH TYPE: VARIOUS (FREE ISSUE)



STANDARD BUSBAR / ENCLOSURE OPTIONS

BUSBAR SYSTEM	BUSBAR RATINGS	No OF BARS PER PHASE	ENCLOSURE SIZES
K ²⁶ ATTA™	26KA FOR 1 SECOND	1	2130mm HIGH 665mm DEEP
	630A HORIZONTAL 630A DROPPERS		
K ⁵⁰ ATTA™	50KA FOR 1 SECOND	2	2130mm HIGH 665mm DEEP
	1200A - 2000A HORIZONTAL 630A - 800A DROPPERS		

PLAIN OR TINNED HDHC COPPER AS REQUIRED
 SECONDARY BUSBAR SHROUDING ALSO AVAILABLE
 (OTHER CONFIGURATIONS AVAILABLE UPON REQUEST)

Rolla

Atlas Mill Road, Brighouse
 West Yorkshire, England, HD6 1ET
 Telephone: (01484) 710226
 Fax: (01484) 718608
 Email - sales@rolla.co.uk
 Website - www.rolla.co.uk



TITLE

**INCOMING SECTION
 400A - 800A
 DATA SHEET**

DRAWN	DATE	DRAWING NUMBER
ML	MAY 2002	KATTA 005