

SPECIFICATION

EN60439-1:1994
 MATERIAL: ZINTEC SHEET STEEL TO BS EN 10152:1994
 SEGREGATION: FORM 4
 INGRESS PROTECTION: I.P. 54
 CONSTRUCTION: WELDED OUTER FRAME UNITS, DISHED COVERS & DOORS WITH FULLY WELDED CORNERS & EARTH STUD.
 COMPARTMENTS: INTERCHANGEABLE INSERTS WHITE INSIDE OR AS EXTERNAL COLOUR
 PLINTH: ROLLED STEEL CHANNEL
 PAINT FINISH: ANY STOCK BS4800 OR RAL SEMI GLOSS

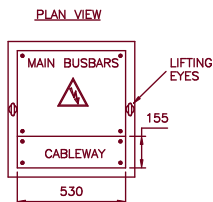
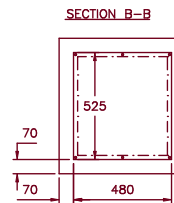
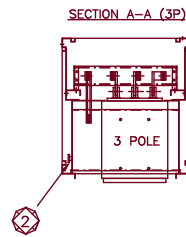
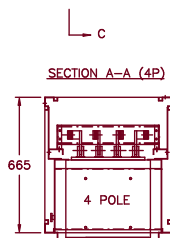
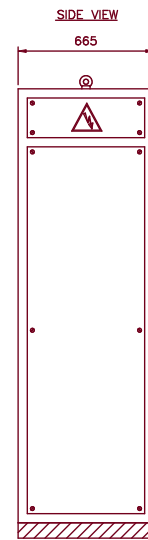
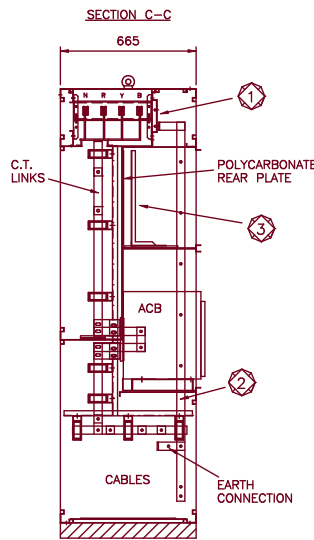
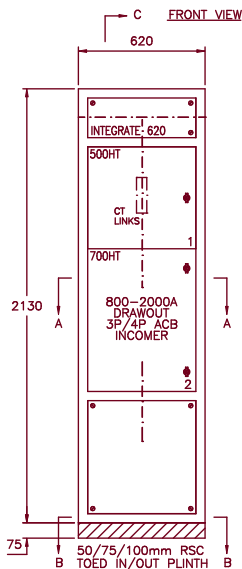
KATTA™

NEW DESIGN INNOVATION FEATURES:

- ① HORIZONTAL TRUNKING MOUNTING FACILITY
- ② INTEGRATED EARTH BONDING FACILITY FOR INSERT COMPARTMENTS WITH EARTH DROPPER BUSBAR
- ③ 'L' PROFILE CHASSIS

INTEGRATE 620 APPLICATION PROFILE

CABLE ACCESS: FRONT OR REAR
 CABLE ENTRY: BOTTOM (AS SHOWN) TOP (VIA REAR BOX)
 ACB TYPE: ABB EMAX 3/4P E2 DRAWOUT TYPE (FREE ISSUE) VERTICAL TERMINALS



STANDARD BUSBAR / ENCLOSURE OPTIONS

BUSBAR SYSTEM	BUSBAR RATINGS	No OF BARS PER PHASE	ENCLOSURE SIZES
K ⁵⁰ ATTA™	50KA FOR 1 SECOND	2	2130mm HIGH 665mm DEEP
	1250A - 2000A HORIZONTAL 1250A-2000A DROPPERS		

PLAIN OR TINNED HDHC COPPER AS REQUIRED
 SECONDARY BUSBAR SHROUDING ALSO AVAILABLE
 (OTHER CONFIGURATIONS ABOVE 2000A AVAILABLE UPON REQUEST)

Rolla

Atlas Mill Road, Brighouse
 West Yorkshire, England, HD6 1ET
 Telephone: (01484) 710226
 Fax: (01484) 718608
 Email - sales@rolla.co.uk
 Website - www.rolla.co.uk



TITLE

INCOMING SECTION
 1000A - 6000A
 MCC DATA SHEET

DRAWN	DATE	DRAWING NUMBER
ML	MAY 2002	KATTA 006