

SPECIFICATION

EN60439-1:1994
 MATERIAL: ZINTEC SHEET STEEL TO BS EN 10152:1994
 SEGREGATION: FORM 4
 INGRESS PROTECTION: I.P. 54
 CONSTRUCTION: WELDED OUTER FRAME UNITS, DISHED COVERS & DOORS WITH FULLY WELDED CORNERS & EARTH STUD.
 COMPARTMENTS: INTERCHANGEABLE INSERTS WHITE INSIDE OR AS EXTERNAL COLOUR
 PLINTH: ROLLED STEEL CHANNEL
 PAINT FINISH: ANY STOCK BS4800 OR RAL SEMI GLOSS

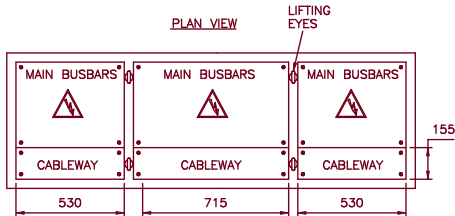
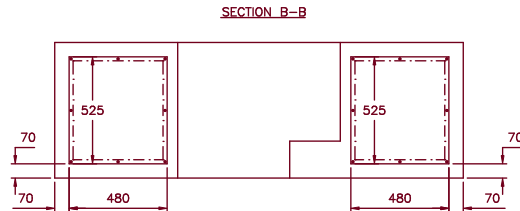
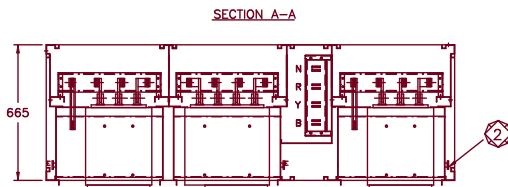
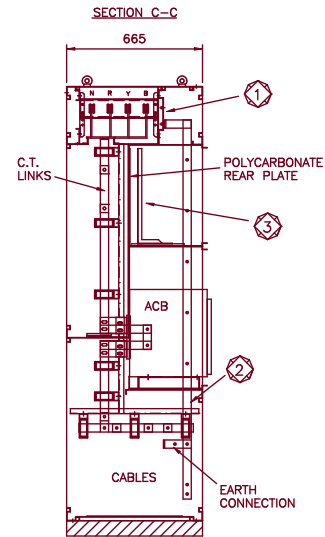
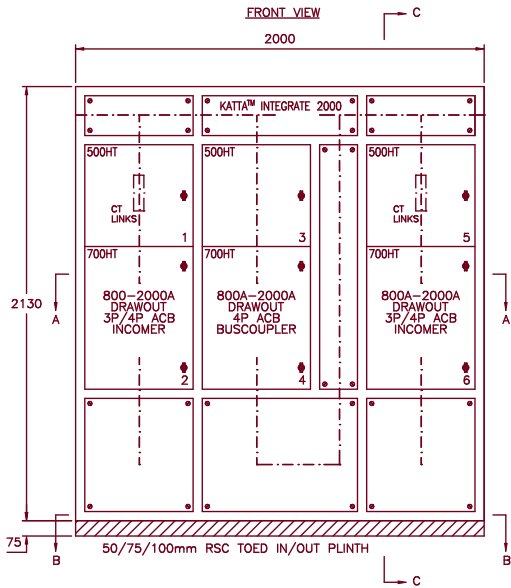
KATTA™

NEW DESIGN INNOVATION FEATURES:

- ① HORIZONTAL TRUNKING MOUNTING FACILITY
- ② INTEGRATED EARTH BONDING FACILITY FOR INSERT COMPARTMENTS WITH EARTH DROPPER BUSBAR
- ③ 'L' PROFILE CHASSIS

INTEGRATE 620 APPLICATION PROFILE

CABLE ACCESS: FRONT OR REAR
 CABLE ENTRY: BOTTOM (AS SHOWN) TOP (VIA REAR BOX)
 ACB TYPE: ABB EMAX 3/4P (FREE ISSUE) E2 DRAWOUT TYPE VERTICAL TERMINALS



STANDARD BUSBAR / ENCLOSURE OPTIONS

| BUSBAR SYSTEM | BUSBAR RATINGS | No OF BARS PER PHASE | ENCLOSURE SIZES |
|-----------------------|---|----------------------|---------------------------|
| K ⁵⁰ ATTA™ | 50KA FOR 1 SECOND 1250A - 2000A HORIZONTAL 1250A-2000A DROPPERS | 2 2 | 2130mm HIGH 665mm DEEP |

PLAIN OR TINNED HDHC COPPER AS REQUIRED
 SECONDARY BUSBAR SHROUDING ALSO AVAILABLE
 (OTHER CONFIGURATIONS ABOVE 2000A AVAILABLE UPON REQUEST)

Rolla

Atlas Mill Road, Brighouse
 West Yorkshire, England, HD6 1ET
 Telephone: (01484) 710226
 Fax: (01484) 718608
 Email - sales@rolla.co.uk
 Website - www.rolla.co.uk



TITLE

**BUSCOUPLER & COMBINED
 INCOMING SECTIONS 1000A - 6000A
 DATA SHEET**

| DRAWN | DATE | DRAWING NUMBER |
|-------|----------|----------------|
| ML | MAY 2002 | KATTA 007 |