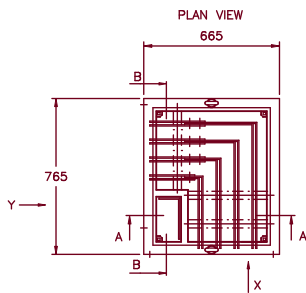
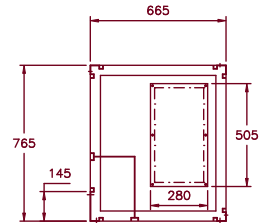
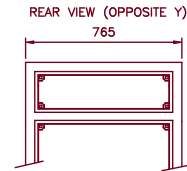
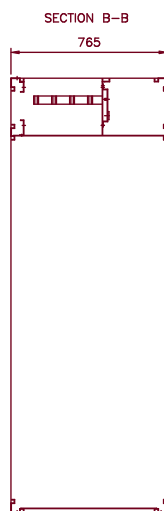
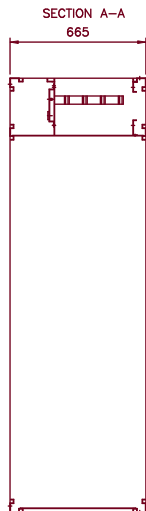
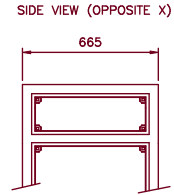
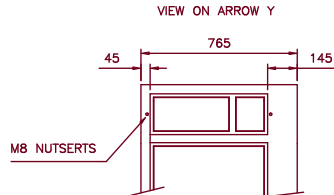
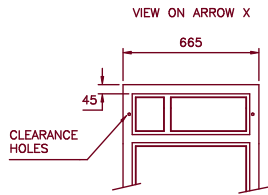


SPECIFICATION

EN60439-1:1994
 MATERIAL: ZINTEC SHEET STEEL
 TO BS EN 10152:1994
 SEGREGATION: FORM 4
 INGRESS PROTECTION: I.P. 54
 CONSTRUCTION: WELDED OUTER FRAME
 UNITS, DISHED COVERS
 WITH FULLY WELDED
 CORNERS.
 PLINTH: ROLLED STEEL CHANNEL
 PAINT FINISH: ANY STOCK BS4800 OR RAL
 SEMI GLOSS



STANDARD BUSBAR / ENCLOSURE OPTIONS

BUSBAR SYSTEM	BUSBAR RATINGS	No OF BARS PER PHASE	ENCLOSURE SIZES
K ²⁵ ATTA™	26KA FOR 1 SECOND 630A HORIZONTAL	1	2130mm HIGH 665mm DEEP
K ⁵⁰ ATTA™	50KA FOR 1 SECOND 1200A - 2000A HORIZONTAL	2	2130mm HIGH 765mm DEEP

PLAIN OR TINNED HDHC COPPER AS REQUIRED
 SECONDARY BUSBAR SHROUDING ALSO AVAILABLE
 (OTHER CONFIGURATIONS AVAILABLE UPON REQUEST)

Rolla

Atlas Mill Road, Brighouse
 West Yorkshire, England, HD6 1ET
 Telephone: (01484) 710226
 Fax: (01484) 718608
 Email - sales@rolla.co.uk
 Website - www.rolla.co.uk



TITLE

MCC
 CORNER UNIT
 DATA SHEET

DRAWN	DATE	DRAWING NUMBER
ML	MAY 2002	KATTA 009