

# 80KA FOR 1 SECOND

AVAILABLE THE FOLLOWING RATINGS

1600A  
2500A

FULLY COMPLIANT WITH  
**BS EN 61439-2**  
(IEC 61439-2)

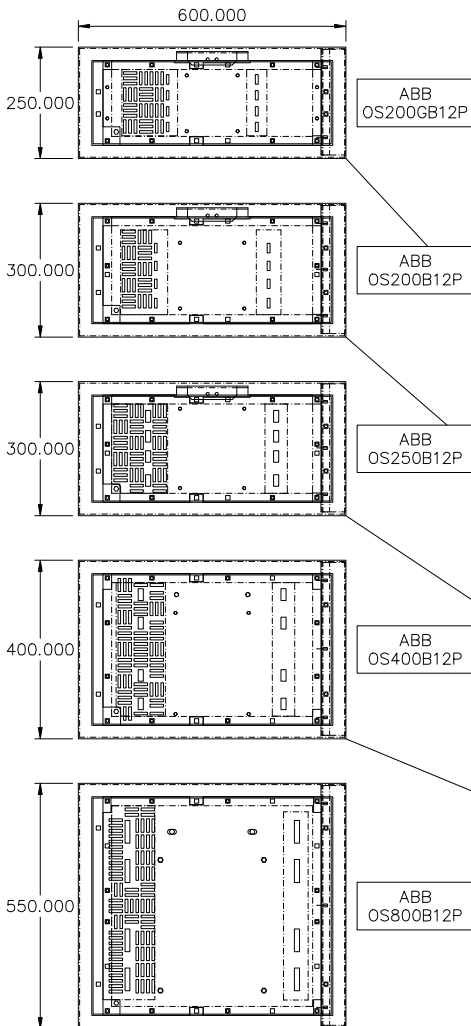
# 100KA FOR 1 SECOND

AVAILABLE THE FOLLOWING RATINGS

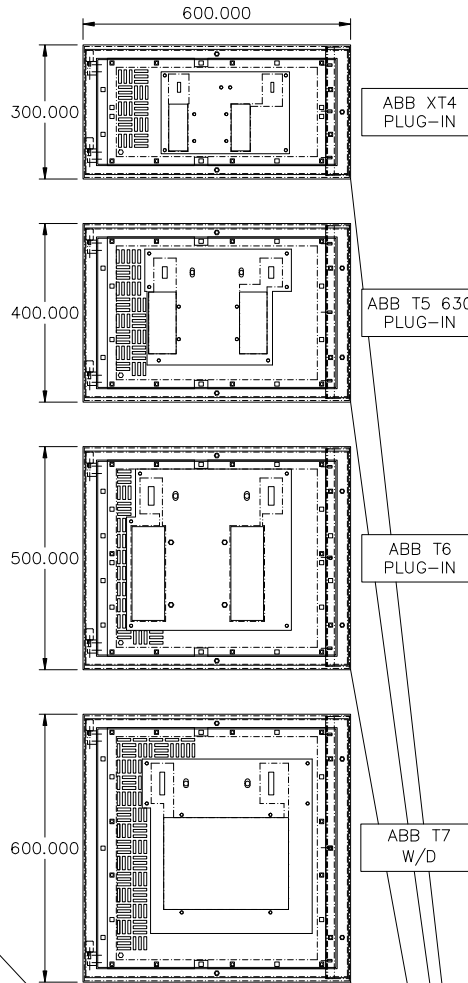
3200A  
4000A  
5000A  
6300A

BUILD-UP YOUR 1800HT WORKING AREA USING A COMBINATION OF THE DEVICE BOXES SHOWN BELOW. MIX & MATCH THE FUSE SWITCHES & M.C.C.B.'s AS YOUR PROJECT REQUIRES.

### TYPICAL FUSE SWITCH SIZES

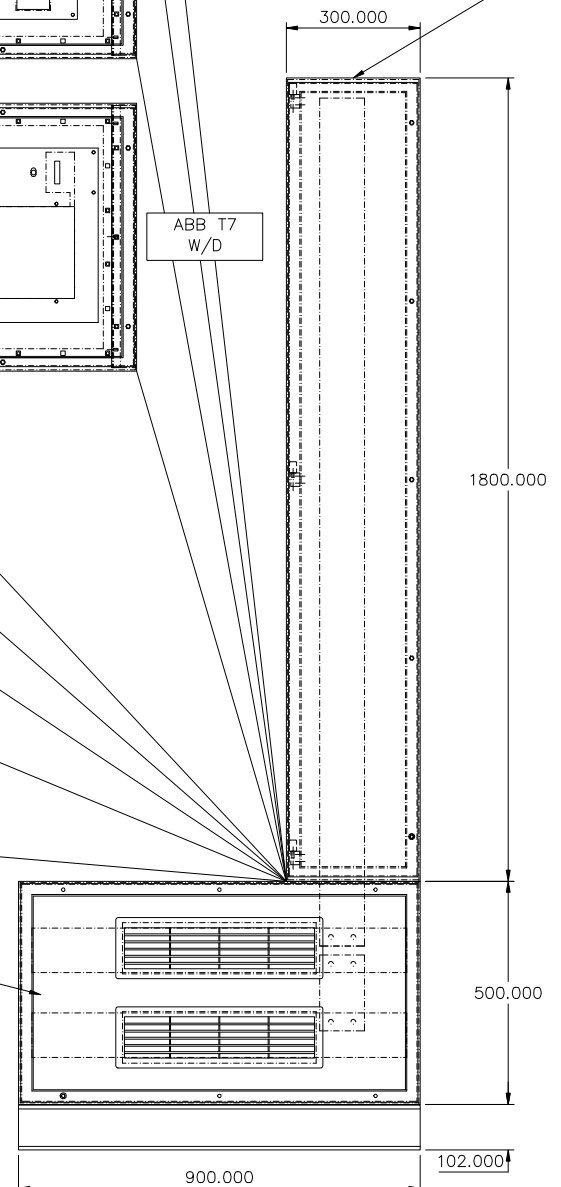


### TYPICAL M.C.C.B. SIZES



300W RISER WAY WITH INTERWIRING CHAMBER AT FRONT

DEVICE VENTILATION CHAMBER AT FRONT & MAIN BAR CHAMBER AT REAR



**TOP REAR CABLING** (SHOWN AS AN EXAMPLE ONLY)