

50KA FOR 1 SECOND

800A

FULLY COMPLIANT WITH
BS EN 61439-2
(IEC 61439-2)

ROLLA's **INTRINSIC 4** RANGE IS A 400mm DEEP HIGH INTEGRITY FORM 4 MODULAR AND EXTENDIBLE DISTRIBUTION BOARD/SUB DISTRIBUTION BOARD.

THE COMPLETE **INTRINSIC 4** RANGE HAS BEEN TYPE TESTED & DESIGN VERIFIED IN CONJUNCTION WITH MAJOR DEVICE MANUFACTURERS, TO THE LATEST INDUSTRY STANDARDS.

THE **INTRINSIC 4** RANGE IS SUPPLIED AS IP21/31 (VENTILATED) OR IP54 (SEALED)

THE **INTRINSIC 4** RANGE IS PAINTED IN-HOUSE & IS AVAILABLE IN ANY BS4800 OR RAL SHADE PAINT COLOUR. COLOUR MIXING OF DOORS IS AVAILABLE.

ALL **INTRINSIC 4** OUTER UNITS ARE MANUFACTURED FROM FULLY WELDED 1.5mm SHEET STEEL WITH EITHER GALVATITE OR ALUMINIUM GLAND PLATES TO SUIT INDIVIDUAL APPLICATION NEEDS.

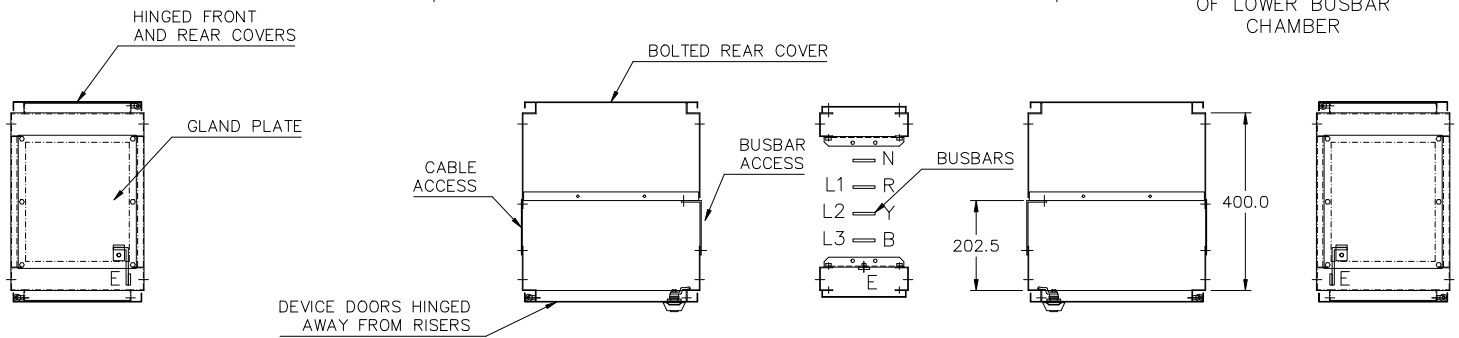
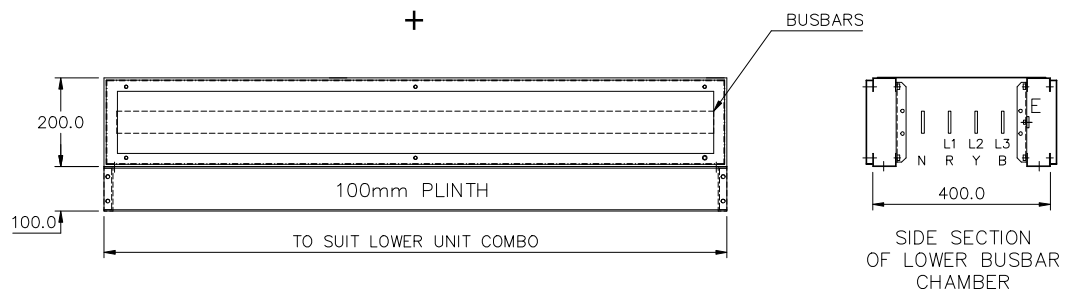
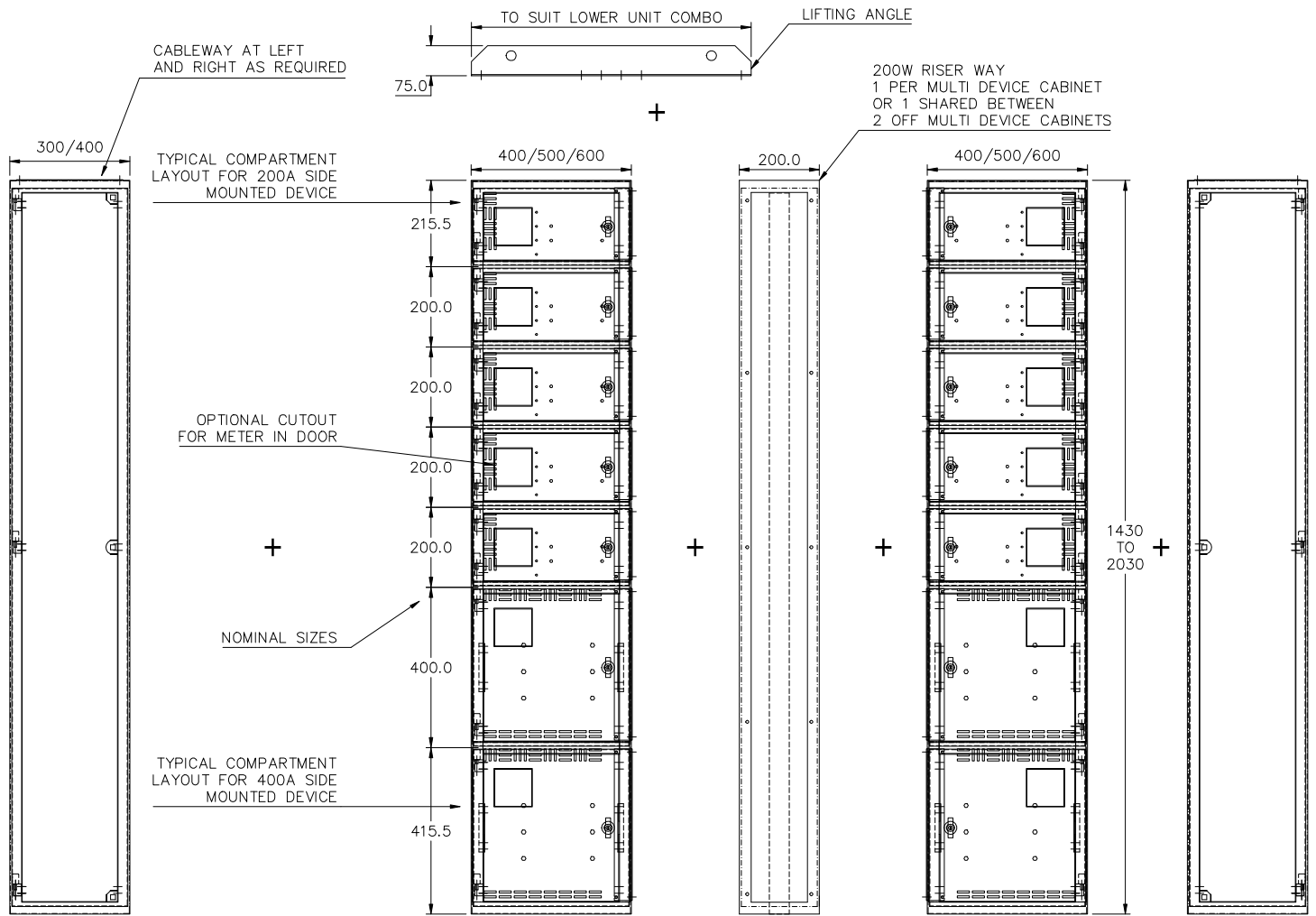
INTRINSIC 4 BUSBARS ARE AVAILABLE AS HDHC PLAIN OR TINNED COPPER.

THE **INTRINSIC 4** SYSTEM HAS FULL DEPTH FRONT ACCESS CABLEWAYS. SEGREGATION IS FORM 4 TYPE 2, 5 OR 6

THE FUNDAMENTAL **INTRINSIC 4** SECTIONS ARE SUPPLEMENTED WITH A RANGE OF ADDITIONAL FEATURES. FOR EXAMPLE, CABLE BOXES, CORNER SECTIONS, OVERHEAD BUSBAR BRIDGE SECTIONS. A WHOLE RANGE OF ANCILLARY PARTS ARE AVAILABLE TO TAILOR YOUR DISTRIBUTION BOARD TO ALL PROJECTS REQUIREMENTS.

THE DOORS & CHASSIS FOR ALL THE COMPARTMENTS ARE PRE PUNCHED TO SUIT YOUR CHOSEN DEVICES. PLEASE CONSULT THE SIZING SHEET FOR THE APPROPRIATE COMPARTMENT SIZES. YOU CAN THEN CHOOSE TO HAVE THE DEVICES EITHER MOUNTED & BARRED IN HOUSE BY US OR, ALTERNATIVELY YOU CAN PURCHASE THE COPPER BARS IN KIT FORM ENABLING YOU TO ASSEMBLE THE DEVICES IN YOUR WORKS.

BOTTOM BUSBARS (SHOWN AS AN EXAMPLE ONLY)



TYPICAL PLAN SECTION OF 300mm CABLEWAY

TYPICAL PLAN SECTION OF A SMALL DEVICE IN 400mm WIDE UNIT

TYPICAL PLAN SECTION OF 200mm RISER WAY

TYPICAL PLAN SECTION OF A SMALL DEVICE IN 400mm WIDE UNIT

50KA FOR 1 SECOND

800A

FULLY COMPLIANT WITH
BS EN 61439-2
(IEC 61439-2)

MULTI DEVICE CABINET – COMPARTMENT SIZING

D
D
D
D
D
D
D
D
D
D

MAXIMUM CURRENT	COMPARTMENT SIZES		DEVICE MANUFACTURER		
	MINIMUM (1) COMPARTMENT HEIGHT (mm)	MINIMUM (2) CABINET WIDTH (mm)	SOCOMEF FUSES WITCH FRAME SIZE	SCHNEIDER MCCB FRAME SIZE	ABB MCCB FRAME SIZE
200A	200	400	13a	NSX250	T3
400A	400	400	16	NSX400	T5
630A	600	400 MCCB, 600 F/SW	17	NSX630	T5
800A	600	400 MCCB, 600 F/SW	17	NS800	T6

NOTES

(INTEGRATED NEUTRAL)

- (1) COMPARTMENT SIZES DO NOT TAKE INTO ACCOUNT CABLE SIZES. THE COMPARTMENT HEIGHTS MAY NEED TO BE ADJUSTED TO ALLOW FOR LARGE CABLES.
 - (2) CABINET WIDTHS DO NOT TAKE INTO ACCOUNT ANY METERING REQUIREMENTS. THE CABINET WIDTHS MAY NEED TO BE ADJUSTED TO ALLOW FOR C.T.'S AND METERS.
 - (3) OPTIONAL 92sq. METER CUTOUTS ARE PROVIDED IN STANDARDISED LOCATIONS, SUBJECT TO THE SPACE AVAILABLE.
- D = DEVICE

DEVICES WITH DEDICATED CABLING COMPARTMENT

C
D
D
D
D
D
D

MAXIMUM CURRENT	MINIMUM CABLING HEIGHT (INCREASE TO SUIT)	MINIMUM DEVICE HEIGHT (INCREASE TO SUIT)	DEVICE DETAILS
400A	400	400	SCHNEIDER NSX400
			SOCOMEF ISOLATOR 2600 X041
			ABB T5
500A	400	400	SCHNEIDER NSX 630
			SOCOMEF ISOLATOR 2600 X051
			ABB T5
630A	400	400	SCHNEIDER NSX 630
			SOCOMEF ISOLATOR 2600 X064
			ABB T6
800A	400	600	SCHNEIDER NS 800
			SOCOMEF ISOLATOR 2600 X081
			ABB T6

NOTES

OTHER SIZES / DEVICE MANUFACTURERS WILL BE CONSIDERED ON REQUEST.
C = CABLING
D = DEVICE

50KA FOR 1 SECOND

AVAILABLE IN THE FOLLOWING RATINGS

800A
1250A
1600A
2000A
2500A
3200A

FULLY COMPLIANT WITH

BS EN 61439-2

(IEC 61439-2)

ROLLA's **INTRINSIC 8** RANGE IS A 800mm DEEP HIGH INTEGRITY FORM 4 MODULAR DISTRIBUTION BOARD.

THE COMPLETE **INTRINSIC 8** RANGE HAS BEEN TYPE TESTED & DESIGN VERIFIED IN CONJUNCTION WITH MAJOR DEVICE MANUFACTURERS, TO THE LATEST INDUSTRY STANDARDS.

THE **INTRINSIC 8** RANGE IS SUPPLIED AS IP21 (VENTILATED).

THE **INTRINSIC 8** RANGE IS PAINTED IN-HOUSE & IS AVAILABLE IN ANY BS4800 OR RAL SHADE PAINT COLOUR.

ALL **INTRINSIC 8** OUTER UNITS ARE MANUFACTURED FROM FULLY WELDED 2mm SHEET STEEL. WITH EITHER GALVATITE OR ALUMINIUM GLAND PLATES TO SUIT INDIVIDUAL APPLICATION NEEDS.

INTRINSIC 8 BUSBARS ARE AVAILABLE AS HDHC PLAIN OR TINNED COPPER.

THE **INTRINSIC 8** MULTI DEVICE CABINETS & RISER WAYS HAVE INTEGRATED, FULL WIDTH REAR ACCESS CABLEWAYS. THE SINGLE DEVICE CABINETS HAVE BOTH FULL WIDTH & DEPTH CABLING.

THE FUNDAMENTAL **INTRINSIC 8** SECTIONS ARE SUPPLEMENTED WITH A RANGE OF ADDITIONAL FEATURES. FOR EXAMPLE, CABLE BOXES, CORNER SECTIONS, OVERHEAD BUSBAR BRIDGE SECTIONS & TRANSFORMER HOUSINGS. A WHOLE RANGE OF ANCILLARY PARTS ARE AVAILABLE TO TAILOR YOUR DISTRIBUTION BOARD TO ALL PROJECTS REQUIREMENTS.

THE DOORS & CHASSIS FOR ALL THE COMPARTMENTS ARE PRE PUNCHED TO SUIT YOUR CHOSEN DEVICES. PLEASE CONSULT THE SIZING SHEET FOR THE APPROPRIATE COMPARTMENT SIZES. YOU CAN THEN CHOOSE TO HAVE THE DEVICES EITHER MOUNTED & BARRED IN HOUSE BY US. OR, ALTERNATIVELY YOU CAN PURCHASE THE COPPER BARS IN KIT FORM ENABLING YOU TO MOUNT & BAR THE DEVICES IN YOUR WORKS.

50KA FOR 1 SECOND

AVAILABLE IN THE FOLLOWING RATINGS

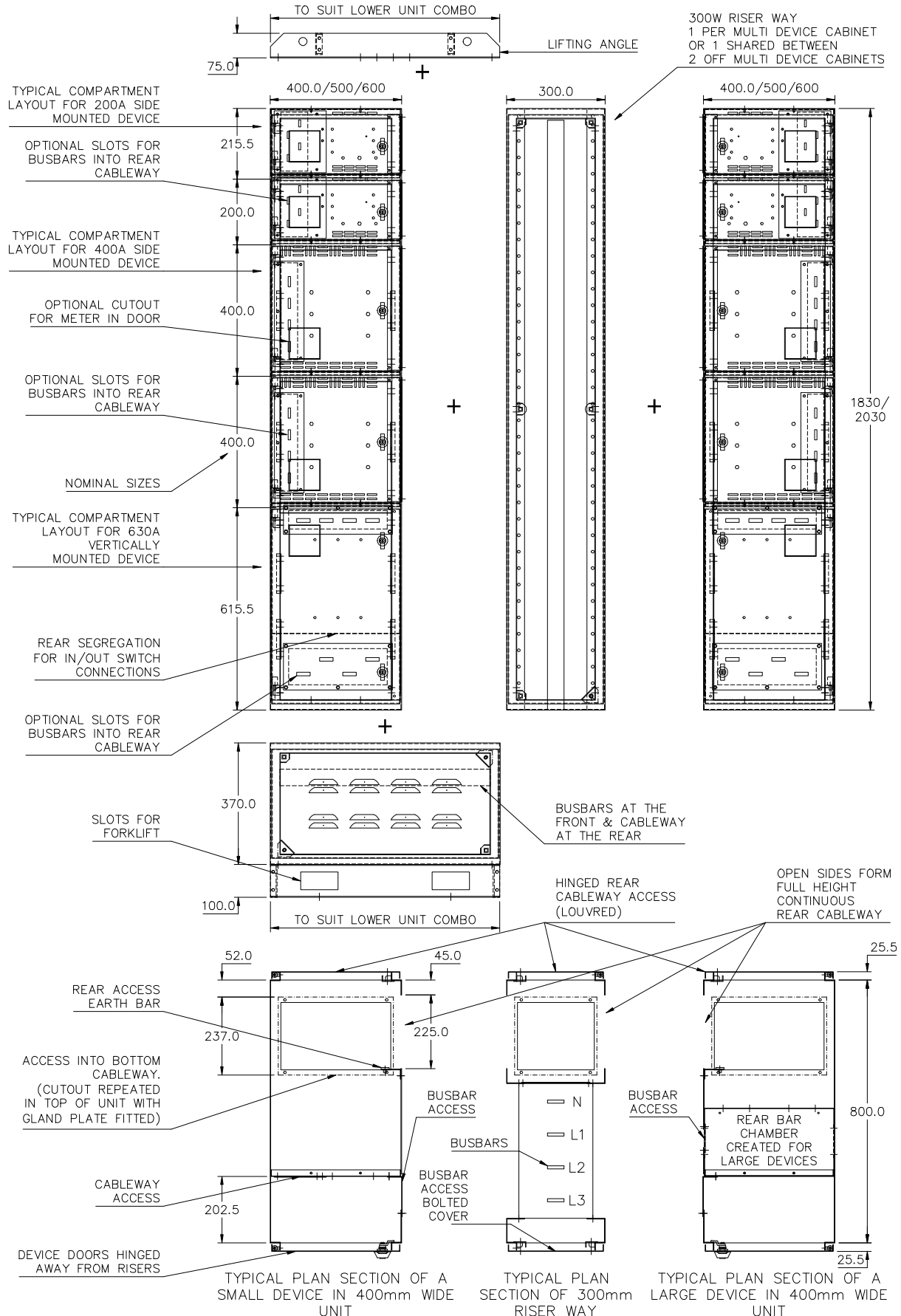
- 800A
- 1250A
- 1600A
- 2000A
- 2500A
- 3200A

FULLY COMPLIANT WITH

BS EN 61439-2

(IEC 61439-2)

BOTTOM BUSBARS (SHOWN AS AN EXAMPLE ONLY)



50KA FOR 1 SECOND

AVAILABLE IN THE FOLLOWING RATINGS

- 800A
- 1250A
- 1600A
- 2000A
- 2500A
- 3200A

FULLY COMPLIANT WITH

BS EN 61439-2

(IEC 61439-2)

BOTTOM BUSBARS

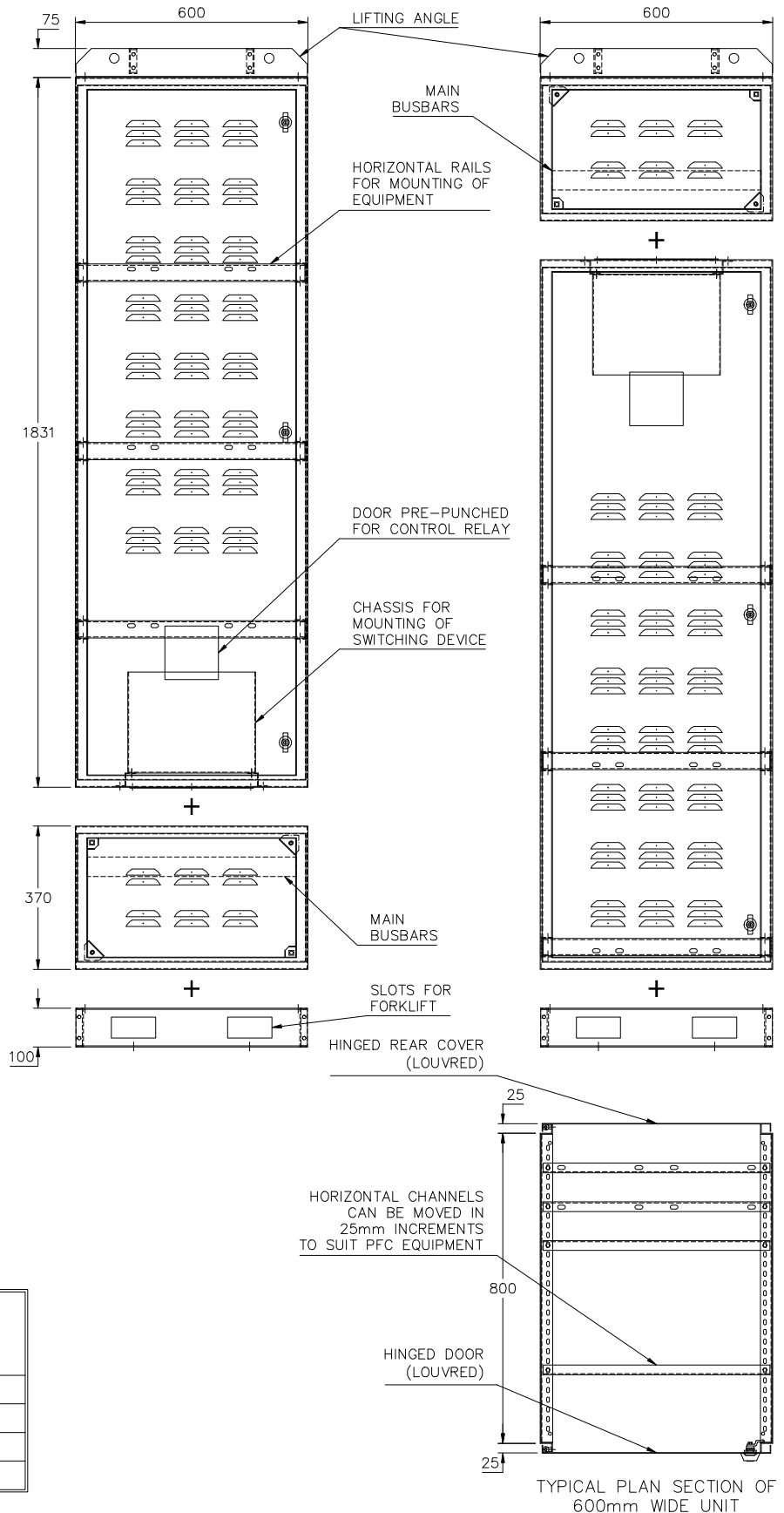
OR

TOP BUSBARS

A HORIZONTAL BUSBAR CHAMBER CAN BE BOLTED ONTO EITHER THE TOP OR BOTTOM OF THIS SECTION.

A SEPARATE CHASSIS IS PROVIDED PUNCHED TO SUIT YOUR CHOSEN SWITCHING DEVICE. THIS IS THEN BARRED DIRECTLY INTO THE HORIZONTAL BUSBAR CHAMBER.

THE UNITS IS SAT ON A PLINTH, COMPLETE WITH FORK LIFTING FACILITY.



TYPICAL PLAN SECTION OF 600mm WIDE UNIT

PFC RATING	DEVICE RATING	CABINET WIDTH
200KVar	400A	600mm
300KVar	630A	600mm
400KVar	800A	1200mm
500KVar	1000A	1200mm

50KA FOR 1 SECOND

AVAILABLE IN THE FOLLOWING RATINGS

- 800A
- 1250A
- 1600A
- 2000A
- 2500A
- 3200A

FULLY COMPLIANT WITH

BS EN 61439-2

(IEC 61439-2)

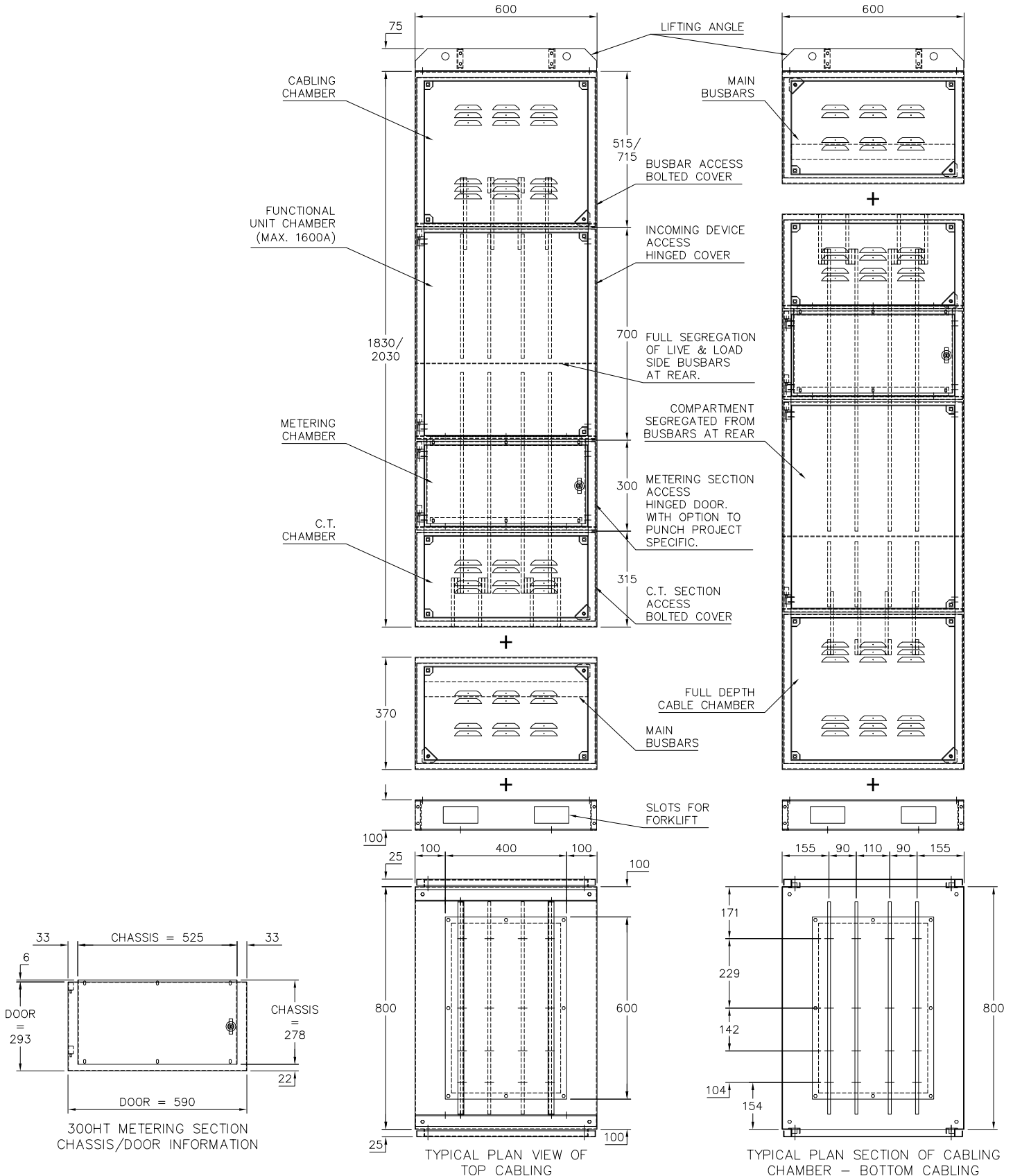
KATTA^(R)

rolla.co.uk

BOTTOM BUSBARS (TOP ENTRY)

OR

TOP BUSBARS (BOTTOM ENTRY)



300HT METERING SECTION CHASSIS/DOOR INFORMATION

TYPICAL PLAN VIEW OF TOP CABLING

TYPICAL PLAN SECTION OF CABLING CHAMBER - BOTTOM CABLING

Rolla

INTRINSIC 8 – SINGLE DEVICE CABINET (600W)

50KA FOR 1 SECOND

AVAILABLE IN THE FOLLOWING RATINGS

- 800A
- 1250A
- 1600A
- 2000A
- 2500A
- 3200A

FULLY COMPLIANT WITH
BS EN 61439-2

(IEC 61439-2)

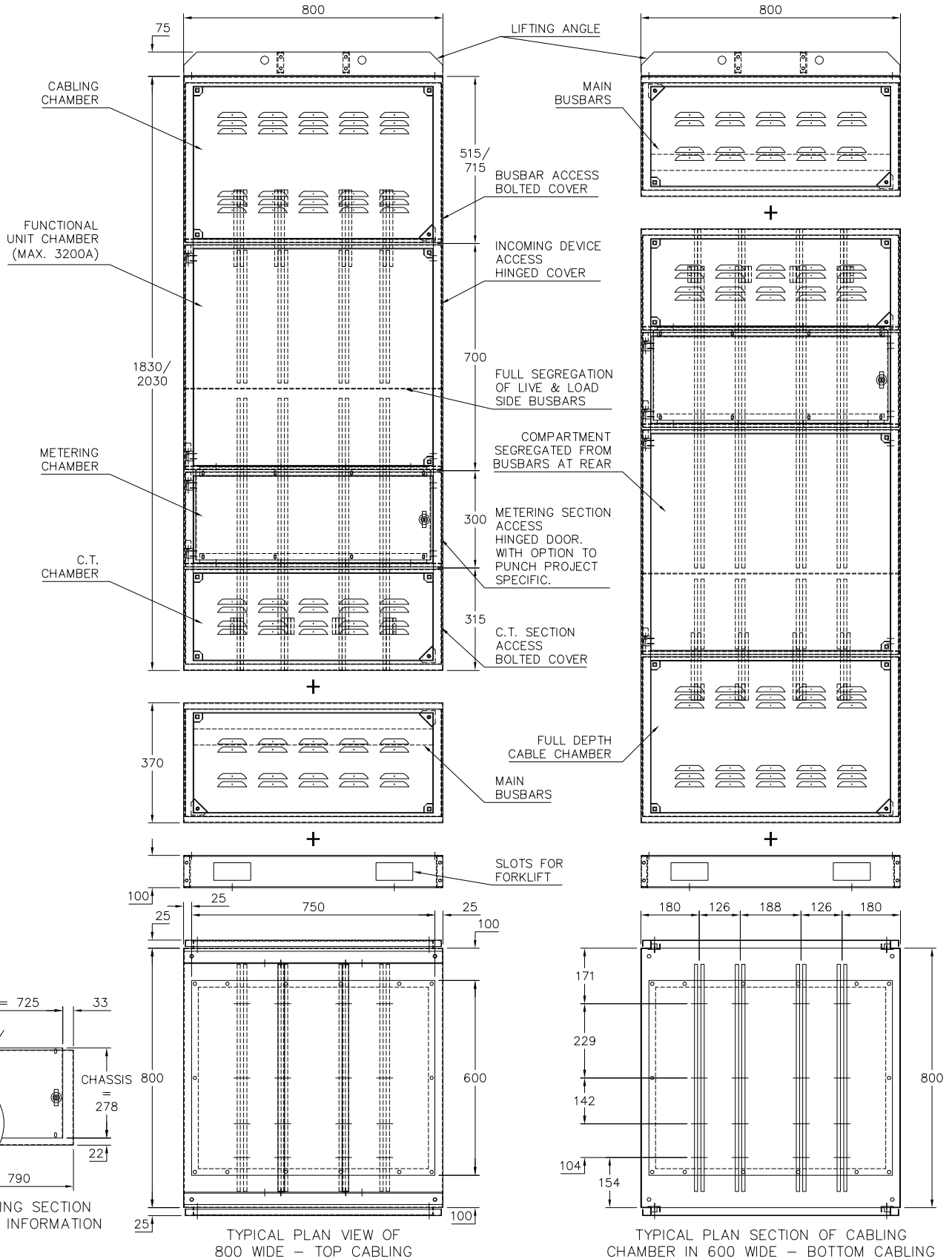
KATTA^(R)

rolla.co.uk

BOTTOM BUSBARS (TOP ENTRY)

OR

TOP BUSBARS (BOTTOM ENTRY)



Rolla

INTRINSIC 8 – SINGLE DEVICE CABINET (800W)

50KA FOR 1 SECOND

AVAILABLE IN THE FOLLOWING RATINGS

- 800A
- 1250A
- 1600A
- 2000A
- 2500A
- 3200A

FULLY COMPLIANT WITH

BS EN 61439-2

(IEC 61439-2)

KATTA^(R)

rolla.co.uk

MULTI DEVICE CABINET – COMPARTMENT SIZING

D
D
D
D
D
D
D
D
D
D

MAXIMUM CURRENT	COMPARTMENT SIZES		DEVICE MANUFACTURER		
	MINIMUM (1) COMPARTMENT HEIGHT (mm)	MINIMUM (2) CABINET WIDTH (mm)	SOCOMEF FUSES SWITCH FRAME SIZE	SCHNEIDER MCCB FRAME SIZE	ABB MCCB FRAME SIZE
200A	200	400	13a	NSX250	T3
400A	400	400	16	NSX400	T5
630A	400 MCCB, 600 F/SW	400 MCCB, 600 F/SW	17	NSX630	T5
800A	600	400 MCCB, 600 F/SW	17	NS800	T6

NOTES

- (1) COMPARTMENT SIZES DO NOT TAKE INTO ACCOUNT CABLE SIZES. THE COMPARTMENT HEIGHTS MAY NEED TO BE ADJUSTED TO ALLOW FOR LARGE CABLES.
- (2) CABINET WIDTHS DO NOT TAKE INTO ACCOUNT ANY METERING REQUIREMENTS. THE CABINET WIDTHS MAY NEED TO BE ADJUSTED TO ALLOW FOR C.T.'S AND METERS.
- (3) OPTIONAL 92sq. METER CUTOUTS ARE PROVIDED IN STANDARDISED LOCATIONS, SUBJECT TO THE SPACE AVAILABLE.

D = DEVICE

SINGLE DEVICE CABINET – CABINET SIZING

M
D
C

MAXIMUM CURRENT	DEVICE MANUFACTURER & FRAME SIZE	MINIMUM CABINET WIDTH
630A	SOCOMEF FRAME SIZE 17	600
	SCHNEIDER NS630b	600
	ABB T5/T6	600
800A	SOCOMEF FRAME SIZE 17	600
	SCHNEIDER NS800/NT08	600
	SCHNEIDER NW08	800
	ABB T6/E1/E2	600
	TERASAKI AR208	600
1250A	SCHNEIDER NT12	600
	SCHNEIDER NW12	800
	ABB E1/E2	600
	TERASAKI AR212	600
1600A	SCHNEIDER NT16	600
	SCHNEIDER NW16	800
	ABB E1/E2	600
	TERASAKI AR216	600
2000A	SCHNEIDER NW20	800
	ABB E2	800
	TERASAKI AR220	800
2500A	SCHNEIDER NW25	800
	ABB E2/E3	800
	TERASAKI AR325	800
3200A	SCHNEIDER NW32	800
	ABB E3	800
	TERASAKI AR332	800

NOTES

OTHER SIZES / DEVICE MANUFACTURERS WILL BE CONSIDERED ON REQUEST.

- M = METERING
- D = DEVICE
- C = CABLING

Rolla

INTRINSIC 8 – SIZING SHEET