

**25KA FOR 1 SECOND**

AVAILABLE THE FOLLOWING RATINGS

400A  
630A  
800AFULLY COMPLIANT WITH  
**IEC 61439-2**  
(BS EN 61439-2)**50KA FOR 1 SECOND**

AVAILABLE THE FOLLOWING RATINGS

800A  
1250A  
1600A  
2000A

ROLLA'S **UCC** RANGE IS A HIGH INTEGRITY FORM 4 MODULAR MOTOR CONTROL CENTRE, SUPPLIED FULLY ASSEMBLED AND READY TO WIRE.

THE COMPLETE **UCC** RANGE HAS BEEN TYPE TESTED & DESIGN VERIFIED IN CONJUNCTION WITH MAJOR DEVICE MANUFACTURERS, TO THE LATEST INDUSTRY STANDARDS.

**UCC** HAS THE FLEXIBILITY TO SUIT THE SMALLER 25KA FOR 1 SECOND APPLICATIONS AS WELL AS THE LARGER 50KA FOR 1 SECOND APPLICATIONS.

THE **UCC** RANGE IS AVAILABLE IN EITHER IP54 OR IP21 (VENTILATED).

THE **UCC** RANGE IS PAINTED IN-HOUSE & IS AVAILABLE IN ANY BS4800 OR RAL SHADE PAINT COLOUR.

ALL **UCC** SECTIONS ARE MANUFACTURED FROM FULLY WELDED 2mm SHEET STEEL. WITH EITHER GALVATITE OR ALUMINIUM GLAND PLATES TO SUIT INDIVIDUAL APPLICATION NEEDS.

**UCC** BUSBARS ARE AVAILABLE AS HDHC PLAIN OR TINNED COPPER. IF THE PROJECT DEMANDS INSULATED BUSBARS, THEN YOU CAN CHOOSE FROM EITHER 'HEAT SHRINK' INSULATED OR SECONDARY POLYCARBONATE SHROUDING MOUNTED BEHIND THE BUSBAR COVERS.

FREE ISSUED DEVICES RANGING IN SIZE FROM 200A TO 2000A CAN BE MOUNTED & BARRED WITHIN THE COMPARTMENTS. WE ALSO OFFER THE OPPORTUNITY TO HAVE DOORS & CHASSIS PRE PUNCHED TO SUIT SMALLER DEVICES. DOING THIS IN HOUSE ENSURES A POLISHED END PRODUCT.

THE FUNDAMENTAL **UCC** SECTIONS ARE SUPPLEMENTED WITH A RANGE OF ADDITIONAL FEATURES. FOR EXAMPLE, CORNER SECTIONS, OVERHEAD BUSBAR BRIDGE SECTIONS & CABLE BOXES. A WHOLE RANGE OF ANCILLARY PARTS ARE AVAILABLE TO TAILOR YOUR MOTOR CONTROL CENTRE TO ALL PROJECTS REQUIREMENTS.

## 25KA FOR 1 SECOND

AVAILABLE THE FOLLOWING RATINGS

- 400A
- 630A
- 800A

FULLY COMPLIANT WITH  
**IEC 61439-2**  
 (BS EN 61439-2)

## 50KA FOR 1 SECOND

AVAILABLE THE FOLLOWING RATINGS

- 800A
- 1250A
- 1600A
- 2000A

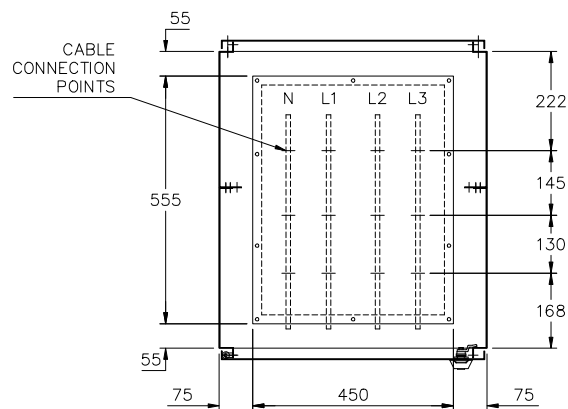
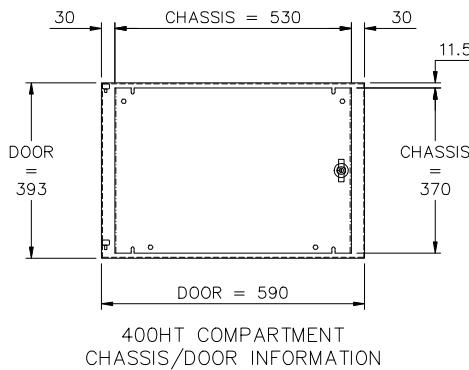
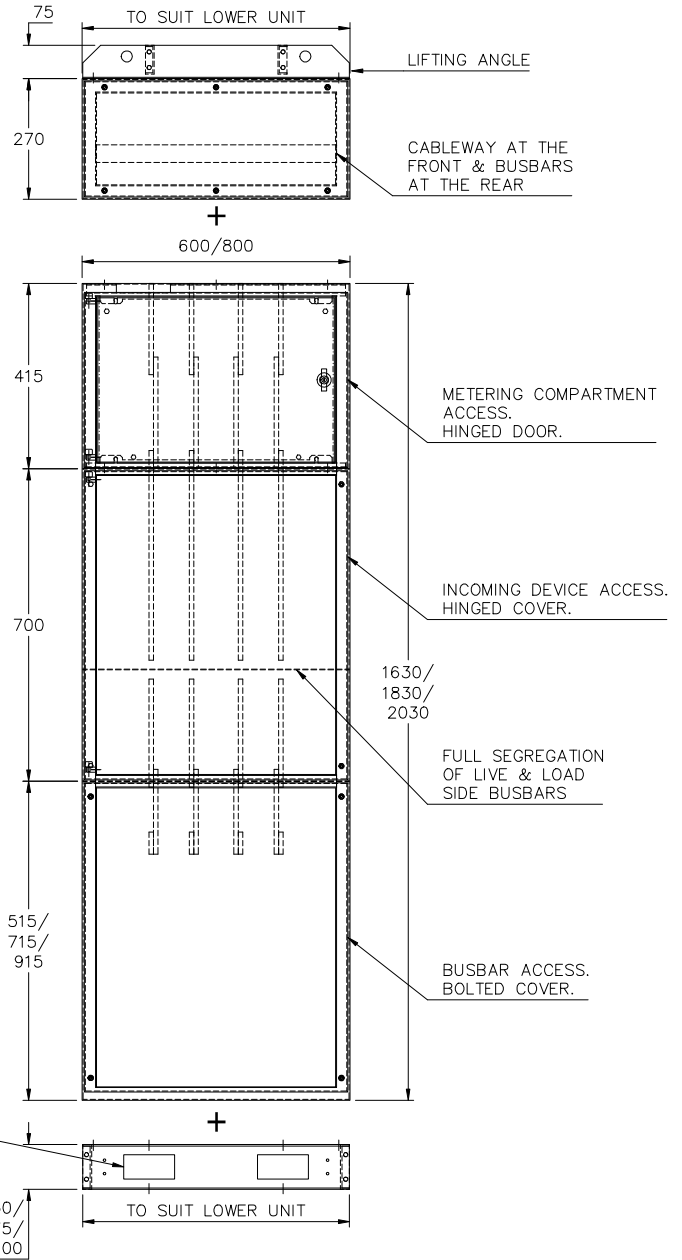
EACH LOWER UNIT COMES COMPLETE WITH A 400mm HIGH METERING SECTION, ACCESS TO THE METERING C.T. LINKS IS VIA. A POLYCARBONATE PLATE, MOUNTED BEHIND THE CHASSIS.

BELOW THIS IS A 700mm HIGH COMPARTMENT DEDICATED TO THE INCOMING/OUTGOING DEVICE. THE COMPARTMENT IS SUITABLE FOR FUSES, M.C.C.B.'s OR A.C.B.'s, TO SUIT EACH INDIVIDUAL PROJECTS NEEDS. ALL DEVICES ARE MOUNTED & BARRED BY ROLLA IN SUCH A WAY AS TO ENSURE THAT IT IS NOT POSSIBLE TO TOUCH THE BUSBARS WITH THE HINGED FRONT COVER OPEN.

THE BOTTOM COMPARTMENT IS A FULL DEPTH CABLING CHAMBER. THIS ENSURES MAXIMUM ACCESS FOR CABLING, BE IT FROM THE FRONT OR REAR OF THE CABINET.

ADD A HORIZONTAL BUSBAR/CABLEWAY TO CONNECT SEVERAL UNITS & MAINTAIN EXTENDIBILITY.

SIT THE UNITS ON A PLINTH OF AN APPROPRIATE HEIGHT TO SUIT THE SITE INSTALLATION REQUIREMENTS.



TYPICAL PLAN SECTION OF CABLING CHAMBER IN 600 WIDE LOWER UNIT

# 25KA FOR 1 SECOND

AVAILABLE THE FOLLOWING RATINGS

- 400A
- 630A
- 800A

FULLY COMPLIANT WITH  
**IEC 61439-2**  
 (BS EN 61439-2)

# 50KA FOR 1 SECOND

AVAILABLE THE FOLLOWING RATINGS

- 800A
- 1250A
- 1600A
- 2000A

EACH LOWER UNIT COMES COMPLETE WITH IT'S OWN SET OF RISER BARS TO ENSURE THE FAULT FREE ZONE IS KEPT TO A MINIMUM. IT ALSO INCORPORATES A REAR ACCESS CABLEWAY.

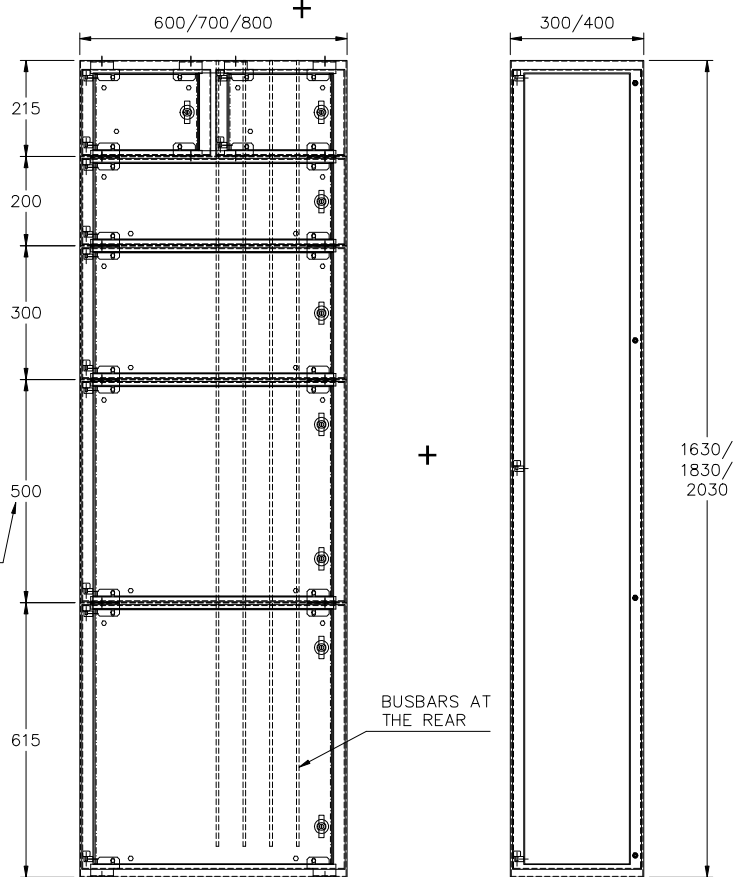
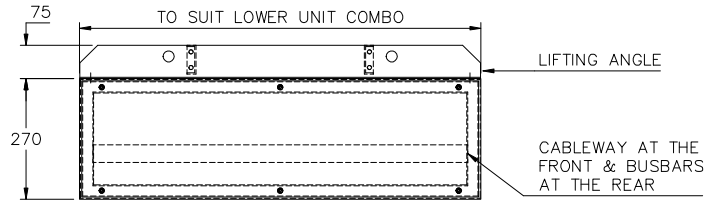
THE LOWER UNIT CAN BE DIVIDED INTO COMPARTMENT SIZES TO SUIT THE NEEDS OF EACH INDIVIDUAL PROJECT. STARTING AT 200mm HIGH & INCREASING IN 50mm INCREMENTS. BE IT SINGLE DOOR COMPARTMENTS, DOUBLE DOOR COMPARTMENTS OR A COMBINATION OF BOTH.

THIS LOWER UNIT CAN HOLD M.C.C.B's OR FUSES OF UPTO 800A FOR EITHER INCOMING OR OUTGOING APPLICATIONS.

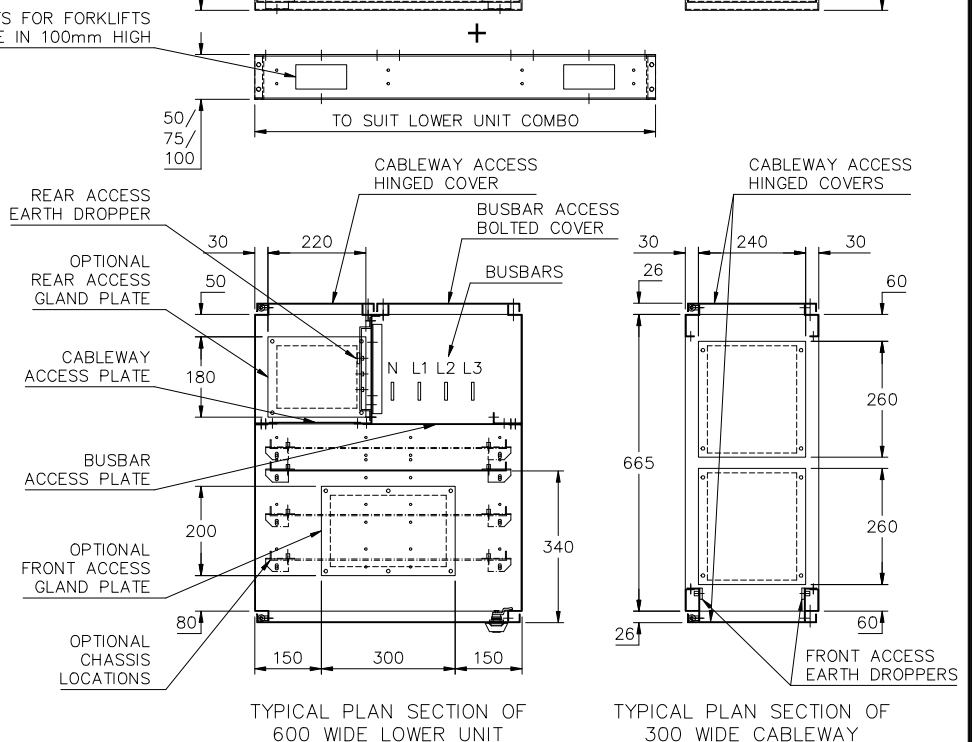
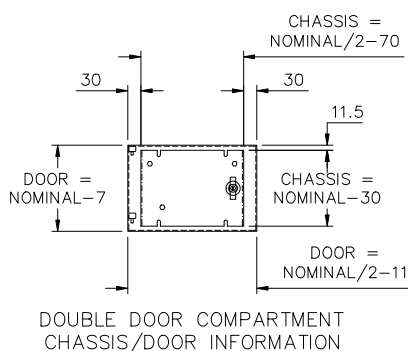
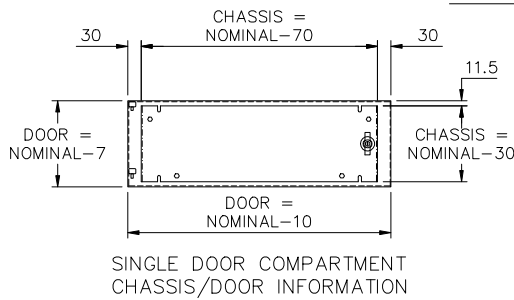
IF FRONT ACCESS CABLING IS REQUIRED ADD A CABLEWAY IN A WIDTH TO SUIT, ON EITHER SIDE OF THE MAIN UNIT. IF SPACE IS AT A PREMIUM SHARE THE CABLEWAY.

ADD A HORIZONTAL BUSBAR/CABLEWAY TO CONNECT SEVERAL UNITS & MAINTAIN EXTENSIBILITY.

SIT THE UNITS ON A PLINTH OF AN APPROPRIATE HEIGHT TO SUIT THE SITE INSTALLATION REQUIREMENTS.



SLOTS FOR FORKLIFTS AVAILABLE IN 100mm HIGH



## 25KA FOR 1 SECOND

AVAILABLE THE FOLLOWING RATINGS

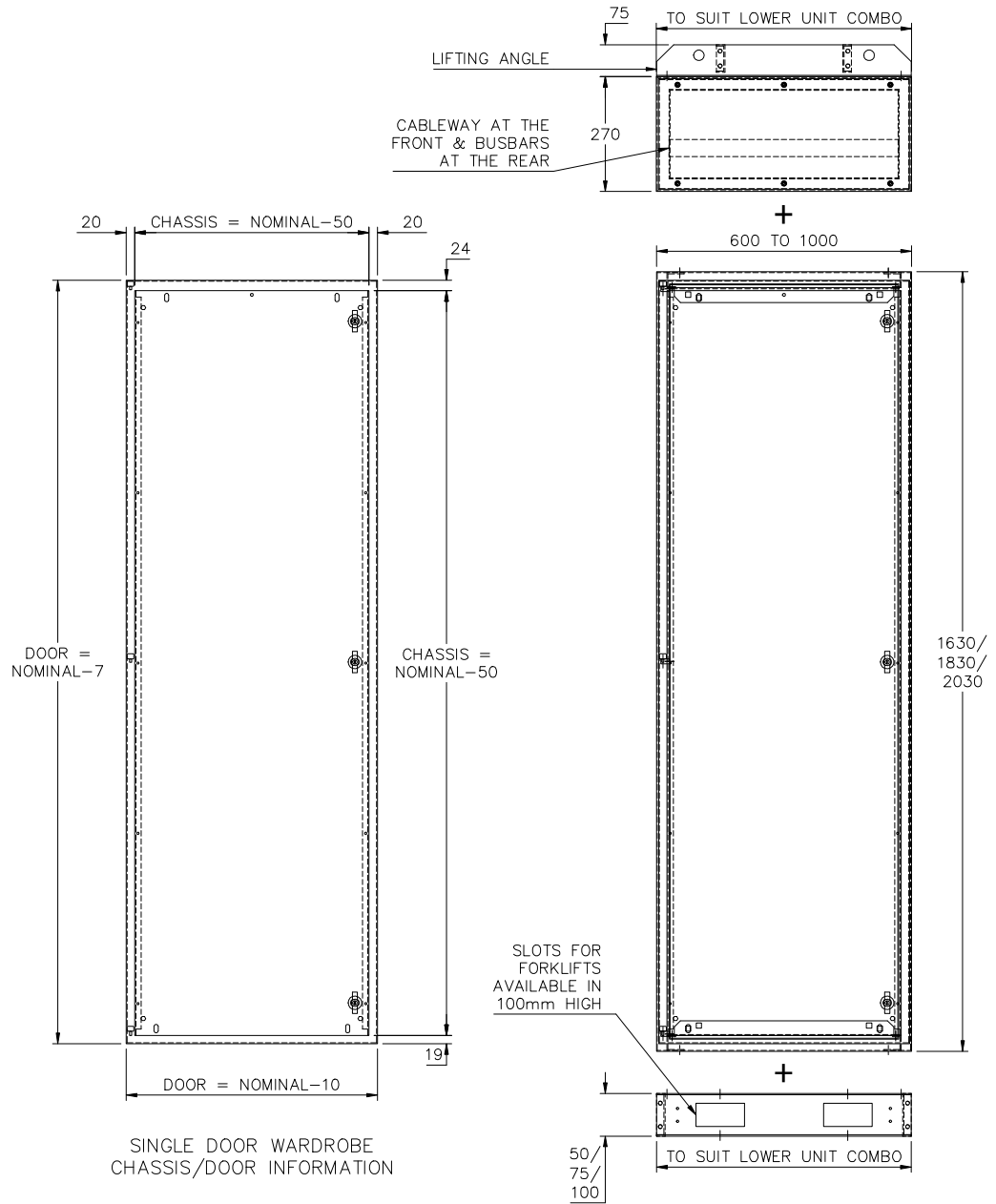
400A  
630A  
800A

FULLY COMPLIANT WITH  
**IEC 61439-2**  
(BS EN 61439-2)

## 50KA FOR 1 SECOND

AVAILABLE THE FOLLOWING RATINGS

800A  
1250A  
1600A  
2000A



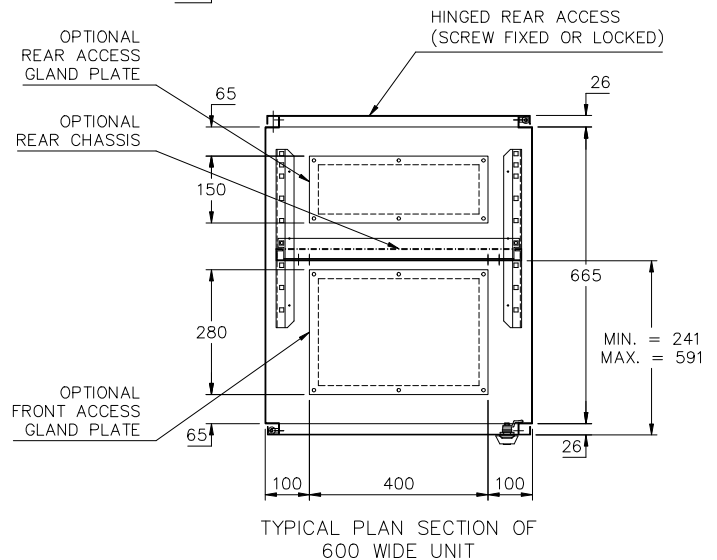
THE SINGLE DOOR LOWER UNIT CAN BE ANY WIDTH FROM 600mm TO 1000mm WIDE, IN 100mm INCREMENTS.

ADD A HORIZONTAL BUSBAR/CABLEWAY TO CONNECT SEVERAL UNITS & MAINTAIN EXTENDIBILITY.

AN ADDITIONAL SWITCH CHASSIS CAN BE PROVIDED TO HOLD A M.C.C.B OR FUSES WITCH, WITH ACCESS INTO THE HORIZONTAL BUSBAR CHAMBER.

THE REAR HINGED COVER CAN BE FITTED WITH LOCKS. WHEN THIS IS USED IN CONJUNCTION WITH A REAR CHASSIS IT PROVIDES AN IDEAL REAR ACCESS TERMINAL CHAMBER.

SIT THE UNITS ON A PLINTH OF AN APPROPRIATE HEIGHT TO SUIT THE SITE INSTALLATION REQUIREMENTS.



# 25KA FOR 1 SECOND

AVAILABLE THE FOLLOWING RATINGS

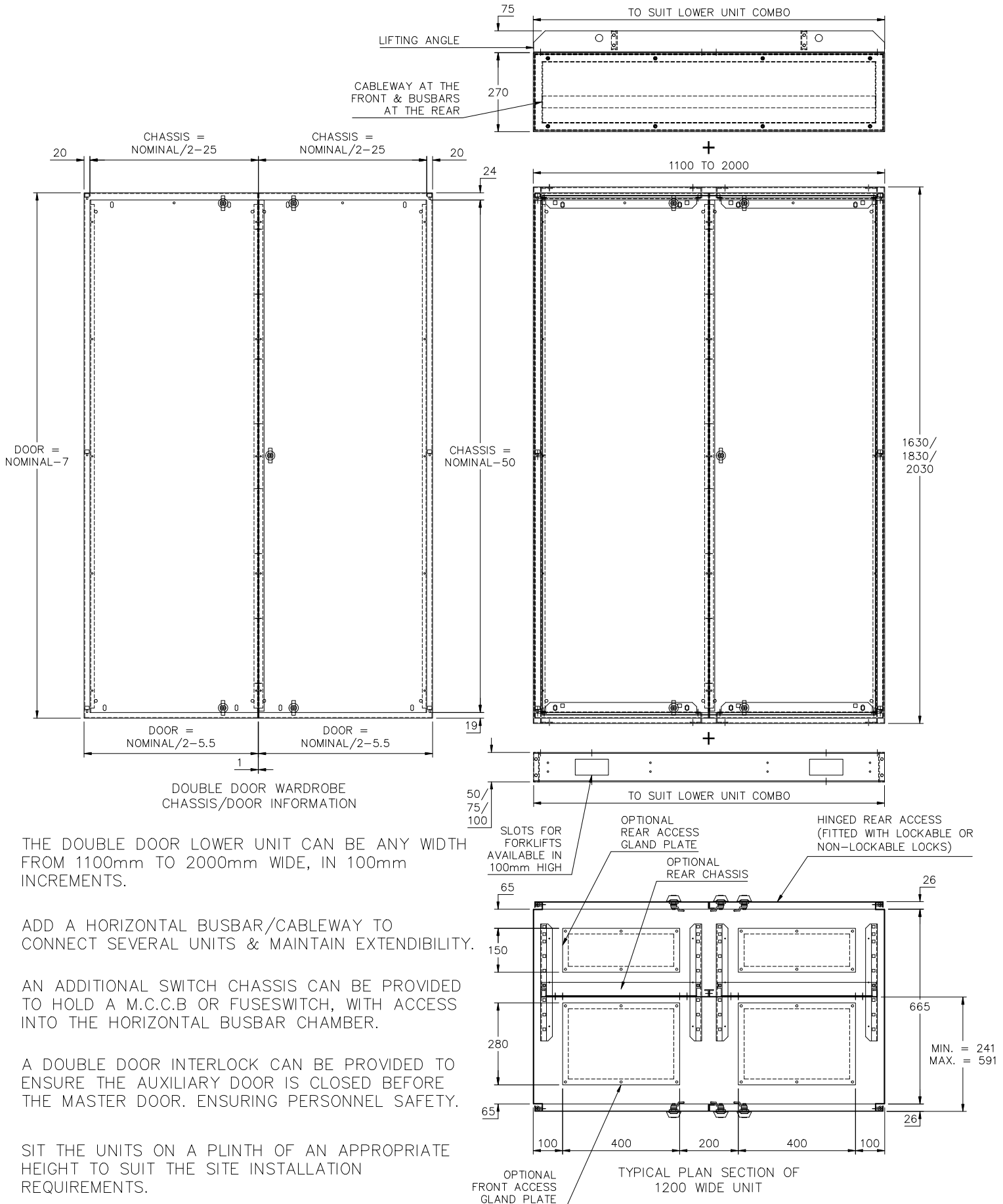
- 400A
- 630A
- 800A

# 50KA FOR 1 SECOND

AVAILABLE THE FOLLOWING RATINGS

- 800A
- 1250A
- 1600A
- 2000A

FULLY COMPLIANT WITH  
**IEC 61439-2**  
 (BS EN 61439-2)



THE DOUBLE DOOR LOWER UNIT CAN BE ANY WIDTH FROM 1100mm TO 2000mm WIDE, IN 100mm INCREMENTS.

ADD A HORIZONTAL BUSBAR/CABLEWAY TO CONNECT SEVERAL UNITS & MAINTAIN EXTENSIBILITY.

AN ADDITIONAL SWITCH CHASSIS CAN BE PROVIDED TO HOLD A M.C.C.B OR FUSES WITCH, WITH ACCESS INTO THE HORIZONTAL BUSBAR CHAMBER.

A DOUBLE DOOR INTERLOCK CAN BE PROVIDED TO ENSURE THE AUXILIARY DOOR IS CLOSED BEFORE THE MASTER DOOR. ENSURING PERSONNEL SAFETY.

SIT THE UNITS ON A PLINTH OF AN APPROPRIATE HEIGHT TO SUIT THE SITE INSTALLATION REQUIREMENTS.